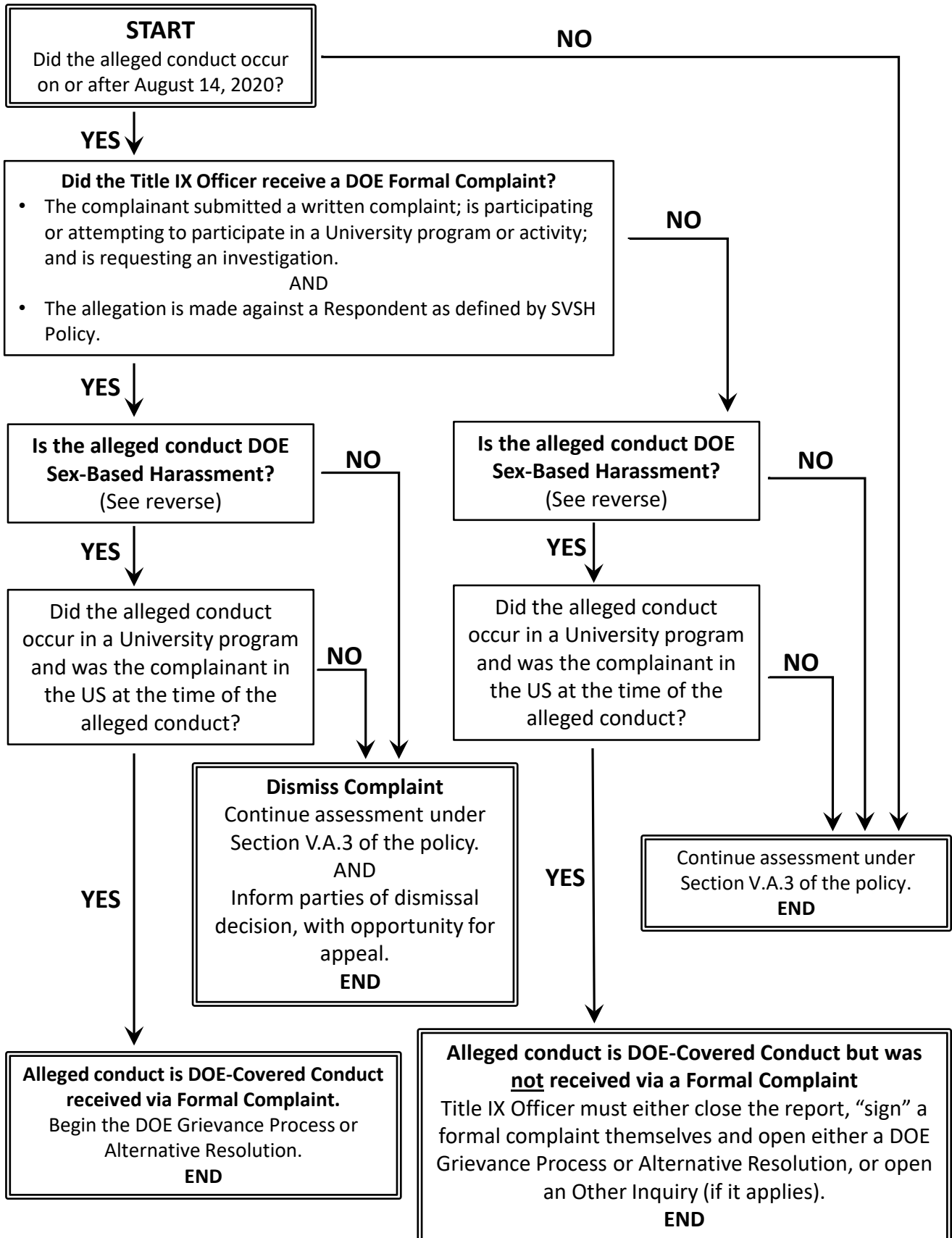


Post- 8/14/2020 SVSH Resolution Process Flowchart

v13aug2020



Is the alleged conduct DOE Sex-Based Harassment?

- Is the alleged behavior conduct that meets the definition of Sexual Assault-Penetration?
OR
- Does the alleged behavior include intentional touching of the Complainant's intimate body part (genitals, anus, groin, breast, or buttocks) without the Complainant's consent (as defined in Section II of the Policy)?
OR
- Is the alleged behavior conduct that meets the definition of Relationship Violence in Section II of the Policy? Is the alleged behavior conduct that meets the definition of Stalking in Section II of the Policy?
OR
- Is the alleged behavior sexual intercourse with a person under the age of 18? Is the alleged behavior conduct that meets the definition of Invasion of Sexual Privacy in Section II of the Policy, and that a reasonable person would determine was so severe, pervasive, and objectively offensive that it effectively denied the Complainant equal access to the University's programs or activities?
OR
- Is the alleged behavior conduct by an employee that meets the definition of Quid Pro Quo Sexual Harassment in Section II of the SVSH Policy?
OR
- Is the alleged behavior unwelcome sexual or other sex-based conduct (as defined in Section II of the Policy) that a reasonable person would determine is so severe, pervasive, and objectively offensive that it effectively denied the Complainant equal access to the University's programs or activities (i.e. SH – Hostile Environment)?

For questions email OPHD: ask_ophd@berkeley.edu

Website: <https://ophd.berkeley.edu/>